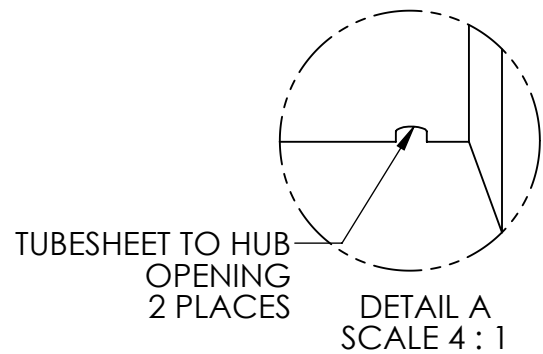
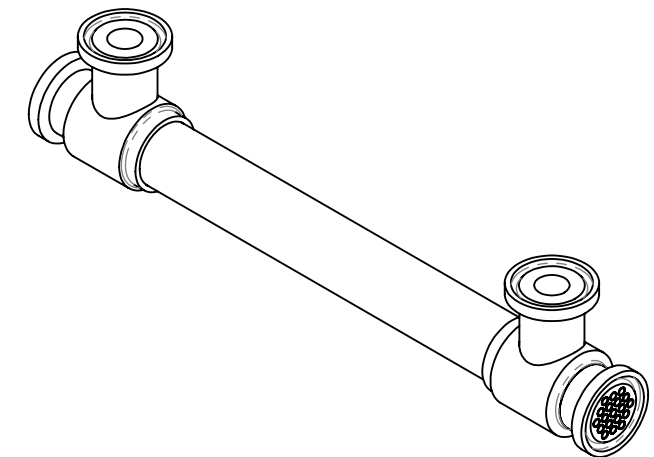
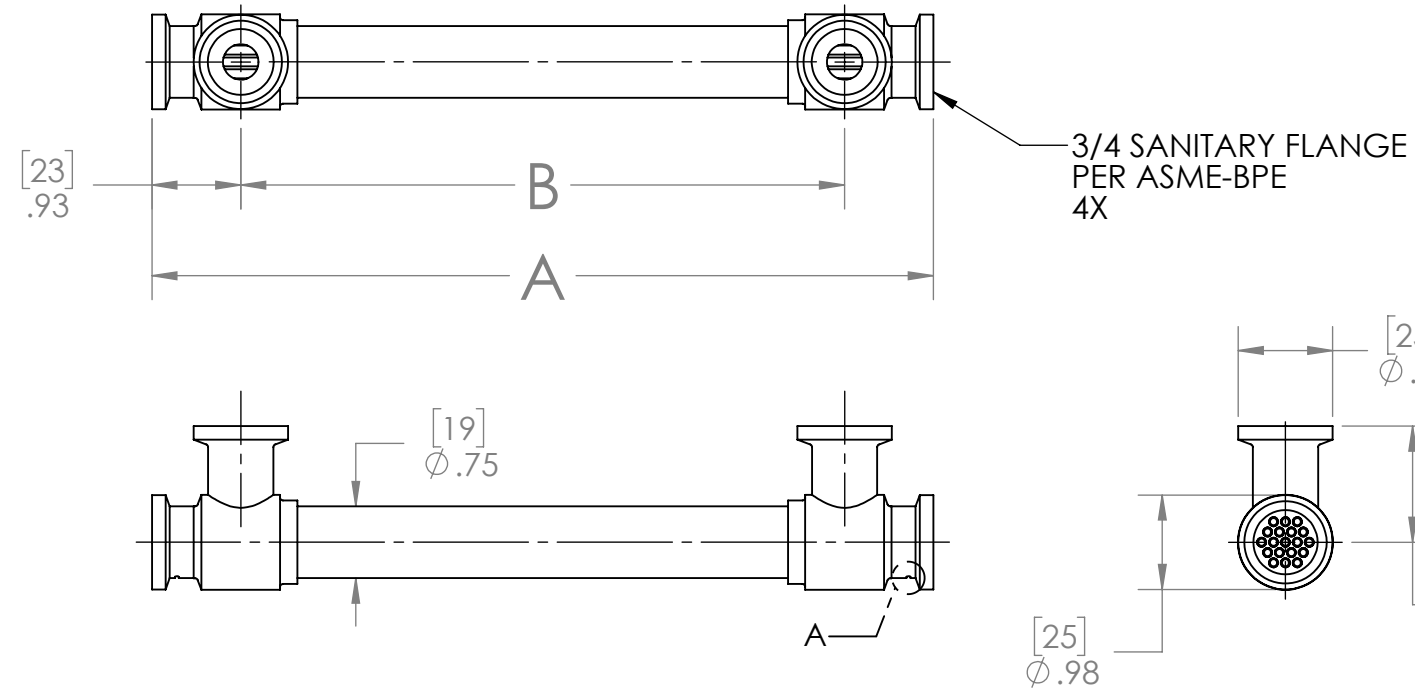


NOTES:

1. MATERIAL: 316L STAINLESS STEEL, NICKEL BRAZED.
2. PRODUCT CONTACT SURFACE FINISH CODE PER ASME-BPE:  
SF1: 20  $\mu$ in. (.5  $\mu$ m) Ra MAX  
SF4: 15  $\mu$ in. (.4  $\mu$ m) Ra MAX, ELECTROPOLISHED.
3. ALL EXTERNAL SURFACES BUFF POLISH FINISH.
4. MAXIMUM OPERATING CONDITIONS:
  - PRESSURE: TUBESIDE - 1,500 psi (103 bar)  
SHELLSIDE - 1,000 psi (69 bar)  
(REFER TO SANITARY CLAMP MANUFACTURER FOR CLAMP PRESSURE RATING)
  - TEMPERATURE: 800°F (425°C)
  - PRESSURE FOR STEAM SERVICE: 125 psi (8.6 bar)
  - FLUID TEMPERATURE DIFFERENCE:  
( $T_{HOT}AVE - T_{COLD}AVE \leq 125°F (70°C)$ )
5. FULLY DRAINABLE ON TUBESIDE.
6. MATERIAL AND PROCESS CERTIFICATIONS PROVIDED.

- #	TUBE COUNT	PRODUCT CONTACT SURFACE FINISH (NOTE 2)	DIM A		DIM B		WEIGHT EMPTY		TRANSFER AREA	
			in	mm	in	mm	lb	kg	in <sup>2</sup>	cm <sup>2</sup>
- 01	19	SF4	4.14	105	2.29	58	0.52	0.2	17.7	114
- 02			8.14	207	6.29	160	0.70	0.3	40.2	259
- 03			12.14	308	10.29	261	0.88	0.4	62.6	404
- 04			16.14	410	14.29	363	1.06	0.5	85.0	548
- 05		SF1	4.14	105	2.29	58	0.52	0.2	17.7	114
- 06			8.14	207	6.29	160	0.70	0.3	40.2	259
- 07			12.14	308	10.29	261	0.88	0.4	62.6	404
- 08			16.14	410	14.29	363	1.06	0.5	85.0	548
- 09		SF4	20.14	512	18.29	465	1.22	0.6	107.5	694
- 10			25.14	639	23.29	592	1.44	0.7	135.5	874
- 11			30.14	766	28.29	719	1.65	0.7	163.6	1055
- 12			20.14	512	18.29	465	1.22	0.6	107.5	694
- 13		SF1	25.14	639	23.29	592	1.44	0.7	135.5	874
- 14			30.14	766	28.29	719	1.65	0.7	163.6	1055



MOUNTING KIT  
• MODEL 01021-03

ALL DIMENSIONS ARE IN INCHES [mm]

**PROPRIETARY AND CONFIDENTIAL**  
THE INFORMATION CONTAINED IN THIS DOCUMENT IS THE SOLE PROPERTY OF EXERGY, LLC. ANY REPRODUCTION, DISCLOSURE, OR USE, IN PART OR AS A WHOLE, WITHOUT THE WRITTEN PERMISSION OF EXERGY, LLC IS PROHIBITED.

PRODUCT SPECIFICATIONS SUBJECT TO CHANGE WITHOUT NOTICE. MANUFACTURER ASSUMES NO LIABILITY FOR MISUSE OR ABUSE OF PRODUCT. SPECIFIC WARRANTY INFORMATION IS AVAILABLE UPON REQUEST.

THIRD ANGLE PROJECTION



**EXERGY** HEAT TRANSFER SOLUTIONS  
320 ENDO BLVD.  
GARDEN CITY, NY 11530  
USA (516)832-9300  
www.exergyllc.com

**SHELL & TUBE HEAT EXCHANGER  
17 SERIES SANITARY  
DOUBLE TUBESHEET, FLANGES**

MODEL NO. **03719 - #**  
DATE **8/23/2017** SCALE **1:2** SHEET **1 OF 1**

MODEL NO.

03719 - #